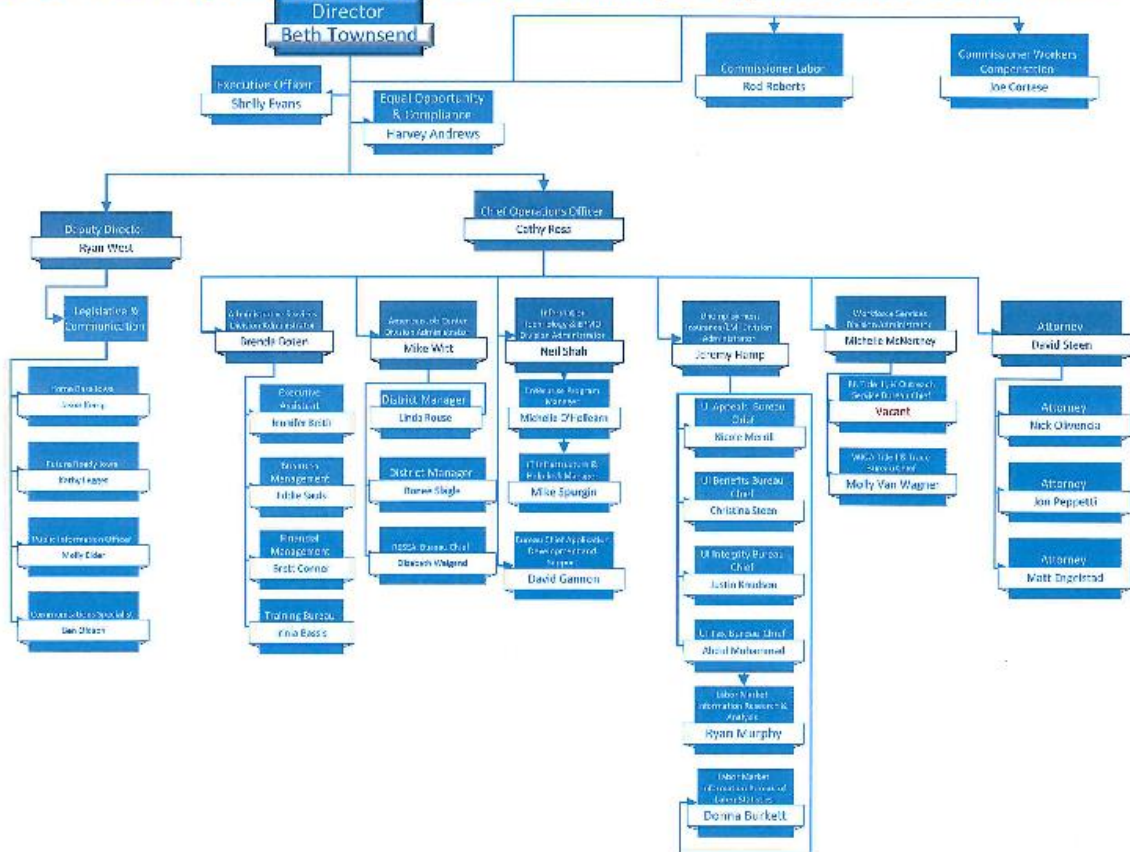
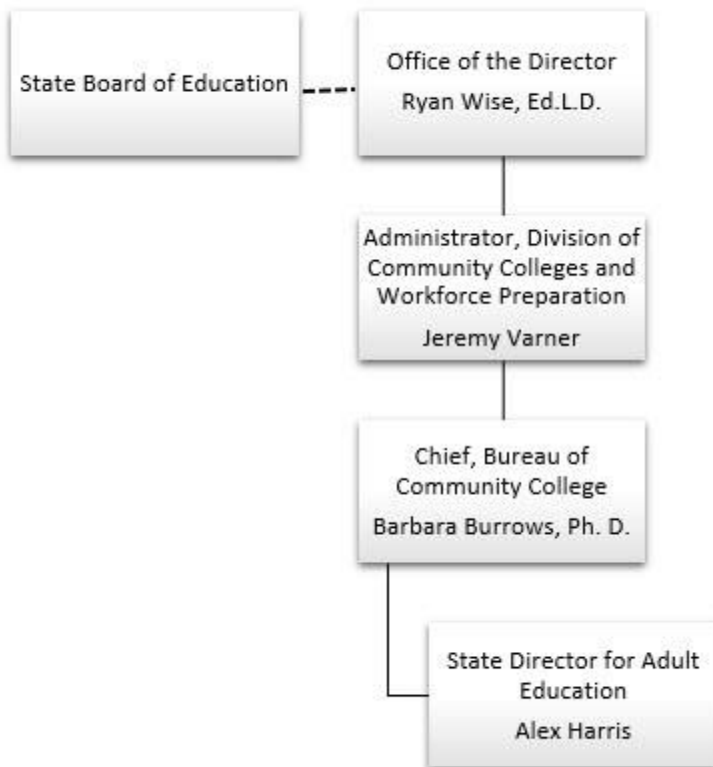
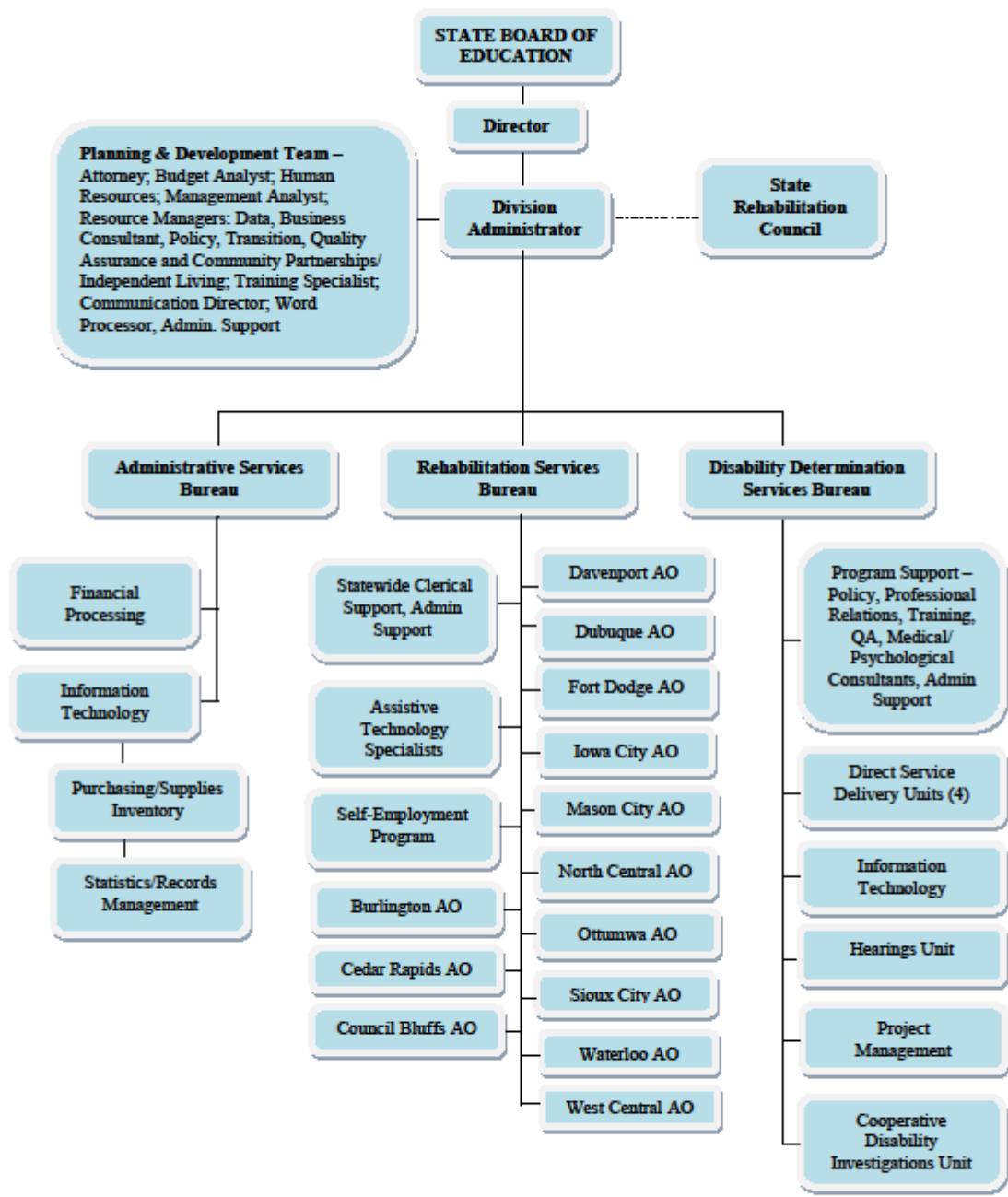


# Iowa Workforce Development Leadership Organizational Chart 12/20/219





## **Adult Education and Literacy Organizational Chart**



**DEPARTMENT OF EDUCATION - IOWA VOCATIONAL REHABILITATION SERVICES**

Updated 01.18.18

# Iowa Department for the Blind Organizational Chart

## **Iowa Commission for the Blind**

Sandra Ryan, Chair

Joe Van Lent, Commissioner

Ryan Brems, Commissioner

### **Direct Reports:**

- Director

## **Emily Wharton, Director**

### **Direct Reports:**

- 1 Executive Secretary
- 1 Accountant Supervisor (CFO)
- 6 Program Administrators

## **Sarah Willeford, Library Director**

### **Direct Reports:**

- 2 Patron Services Librarians
- 1 Special Services Librarian
- 1 Electronic Resources and Discovery Librarian
- 1 Youth Services Librarian
- 1 Accessible Media Specialist
- 1 Digital Recording Specialist/Studio Manager
- 1 Audio Production Librarian
- 1 Braille Coordinator
- 2 Instructional Materials Center Librarians
- 2 Braille Transcribers

## **Helen Stevens, CTO / Education & Training Program Administrator**

### **Direct Reports:**

- 7 Vocational Rehabilitation Teachers (Senior Service Specialist for the Blind 1)

- 3 Rehabilitation Technology Specialists
- 2 Technology Specialists (Senior Service Specialist for the Blind 2)
- 1 Secretary 1
- 1 Activity Specialist 1 (Lead Worker over Temporary Youth workers)
- 15 Temporary Youth Workers

## **Keri Osterhaus, Vocational Rehabilitation Program Administrator**

### **Direct Reports:**

- 10 Vocational Rehabilitation Counselors (SSSB1)
- 1 Employment Specialist (SSSB1)
- 1 Counselor Lead Worker / Quality Assurance Specialist (SSSB1)
- 1 Rehabilitation Technology Specialist
- 1 Secretary 1
- 1 Secretary 2

## **Alan Bickell, Orientation Center Program Administrator**

### **Direct Reports:**

- 1 Rehabilitation Technology Specialist
- 6 Center Instructors (SSSB1)

## **Kim Barber, Independent Living Program Administrator**

### **Direct Reports:**

- 3 Senior Independent Living Teachers (SSSB1)
- 3 Independent Living Teachers (SSB2)
- 1 Secretary 1
- 1 Intake Specialist (SSb1)

## **Cheri Myers, CFO**

### **Direct Reports:**

- 2 Accounting Techs 2
- 1 Accounting Clerk 1

# **Kathy Roat, Facilities & Business Enterprise Program Administrator**

## **Direct Reports:**

- 2 Business Counselors (SSB1)
- 1 Facilities Engineer
- 1 Maintenance Repairer
- 3 Custodians